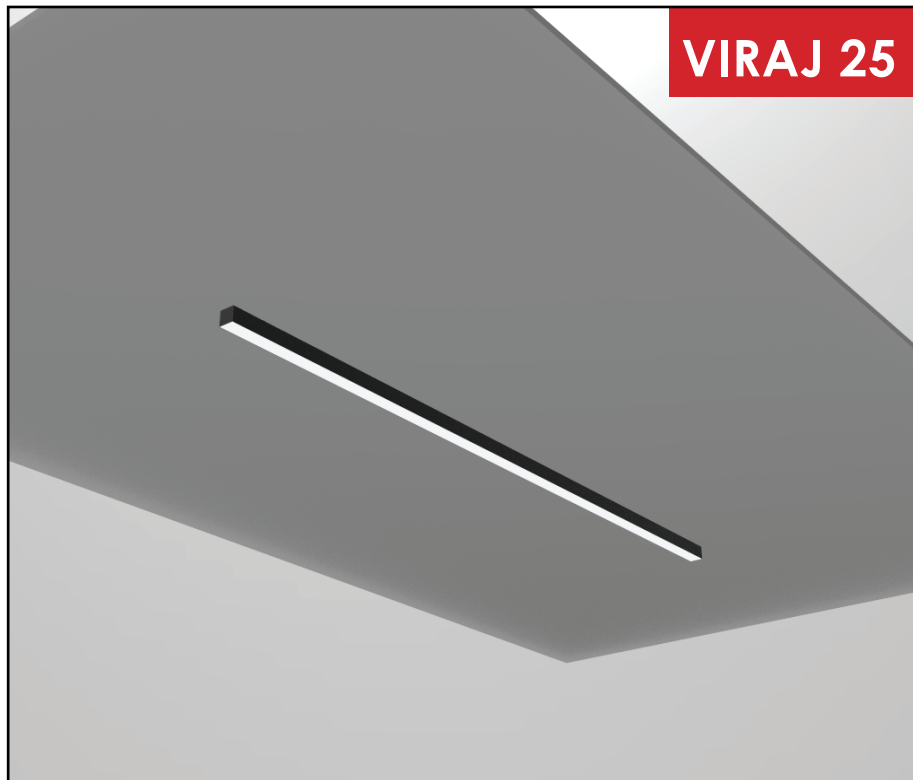


# VIRAJ 25

Direct | Surface



## VIRAJ 25



### Quick Info

#### Mounting Type

Surface

#### Material Colour

Customize RAL available

#### Protection mode

IP40

McAdam- 3

Power Factor (PF) - 0.95

THD - <10%

UGR - <21

#### LED

CCT- 3000K/ 4000K/ 5700K/ TUNABLE WHITE 2700K-6500K

CRI-  $\geq$  90

Life Span-L70 @ 50000h

MacAdam-  $\leq$  3 SDCM

Efficacy-100lm/w

#### Control

DALI DIMMABLE/ NON DIMMABLE/ DALI-2 DT8

#### Beam Angle

Diffused

#### Optics

PMMA Diffuser

#### Electrical

Wattage-25W/4Ft

Input- 220-240 VAC

#### Physical

Length- 1200 mm

Height- 24 mm

Width- 25 mm

Viraj 25 Linear Luminaire in a sleek design with a slim Extruded aluminum housing and with premium powder coating finish.

Powered by high-quality LED's with a binning tolerance of  $\leq$  3 SDCM and CRI  $\geq$  90. The luminaire maintains atleast 70% of its luminous flux after 50,000 operating hours, guaranteeing long-term reliability. HPO diffuser (High-Performance Opal/ PMMA diffuser) provides uniform illumination.

With a standard size of 1200 mm length, 24 mm height, and 25 mm width, this fixture is crafted for direct light distribution making it ideal for professional applications.

Customisations in RAL finish, Wattages and Length available as per request to enhance installation and functionality.

### Single Line Diagram

### Surface

